

# RIPON BID

BUSINESS IMPROVEMENT DISTRICT

## NOVEMBER 2021 NEWSLETTER

### Alleys & Ginnels deep cleaning

From 6pm on Monday 15th November the alleys and ginnels listed below will be deep cleaned.

- **Lavender Alley**
- **The ginnel between Oliver's Pantry & HALLS of Ripon**
- **The ginnel between M&Co & Costa Coffee**
- **The ginnel between Boots & Specsavers**

The BID has updated the neighbouring businesses. The ginnels will be cleaned on a rolling programme i.e. whilst one ginnel is being deep cleaned access will still be available via another. If you have any queries about this please email [info@riponbid.co.uk](mailto:info@riponbid.co.uk). If you have any queries **during** the cleaning process, please contact Chris Henderson of Yorkshire based, UK Nationwide Cleaning Services on 07947 877642.



### Would you like to make savings for your business?

The BID has arranged for a procurement savings service to be available free of charge and with no obligation, to all BID businesses. This service is there to help your business make savings by reviewing your costs and making recommendations.

The saving services can include:

- **Energy: Electricity & Gas (Procurement, Management & Efficiency)**
- **Water: Procurement, Auditing, Measurement**
- **Telecoms: Fixed Line, Mobile, Broadband, Digital & IT Support, Design Services, Hosting**
- **Merchant Services: Credit Card Terminals, Online Trading Platforms, Cardless Technology**
- **Pest Control Services: Annual Contracts, Spot Cleaning & Commercial Sanitisation**
- **Insurance: Commercial Buildings & Contents, Employers Liability, Public Liability etc.**
- **Printing: Stationery, Print Branding & Print Management Solutions**
- **Testing Services: PAT, Fire Risk**

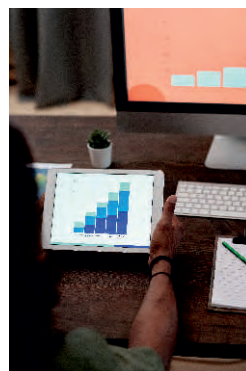
If you would like the money savings expert to visit your business on Tuesday 18th January, please make an appointment by contacting [info@riponbid.co.uk](mailto:info@riponbid.co.uk). The meeting will take less than 30 minutes and all you need to have available is a copy of your current supplier's invoices.



### From 2022 you will have access to Ripon footfall / visitor data evaluation

The BID will start reporting the monthly footfall data, via this newsletter. It will be one of the key performance indicators used to measure the return on investment of BID expenditure on BID produced and supported events and activities. If you have questions about the system that the BID will be using contact us via [info@riponbid.co.uk](mailto:info@riponbid.co.uk).

If you would like to see the evaluation software in action please attend the BID meeting on Monday 24th January from 5:30 - 6:30pm at The Workhouse Museum where Clive Hall, the CEO of Place Informatics will be a speaker.



### Meet with the BID

We are currently meeting BID businesses every day, if you would like Lilla Bathurst to call into your business, let us know.

**Wherever we can we aim to be paper free with the BID's communications - please let us know your e-contact details so that we can achieve this.**

**Ripon BID Contact Details:**  
**[info@riponbid.co.uk](mailto:info@riponbid.co.uk)**  
**01765 530 910**

Printed on recyclable paper FSC certified stock 100% recyclable  
Designed & Printed in Ripon

#### For Retailers / F & B / High Street Businesses

17th Jan 5:30pm - 6:30pm  
at The Workhouse Museum

**Speaker: Rishi Sood**

**Business money savings expert**

[www.placesupportpartnerhsip.com](http://www.placesupportpartnerhsip.com)

#### For Leisure Businesses / Visitor Attractions / Accommodation Providers

24th Jan 5:30pm - 6:30pm  
at The Workhouse Museum

**Speaker: Clive Hall**

**Visitor data evaluation expert**

[www.placeinformatics.com](http://www.placeinformatics.com)

To guarantee your place at either event R.S.V.P. [info@riponbid.co.uk](mailto:info@riponbid.co.uk)



## Ripon City region events coming up in November & December 2021

From next year the BID will have a dedicated platform to profile all Ripon BID businesses events. Until then, we have listed some of the events that are taking place in the Ripon city region over the next few weeks. Please check with each venue's website for more details. This list is produced to support the city region's businesses, to help them to know what is happening in different venues over the festive period. If you are a BID business and you are holding an event from mid December and you would like it profiled in the next newsletter please let us know.

20 Nov	<b>Christmas Lights Switch-on event</b> , Ripon Market Square	1:00pm 'Switch-on' at 5:00pm
26 - 27 Nov	<b>Christmas Gift &amp; Food Fair</b> , Ripon Cathedral	9:30am - 4:30pm
28 Nov	<b>Advent Service &amp; Procession</b> , Ripon Cathedral	5:30pm
1 Dec - 4 Jan	<b>Children's Christmas Trail</b> , Ripon Cathedral	
4 Dec	<b>Santa's Grotto</b> , Ripon Town Hall	10:00am - 2:00pm
	<b>Festive Family Fun</b> , Lightwater Valley	3:30 - 7:30pm
4 Dec - 3 Jan	<b>Children's Christmas Trail</b> , Fountains Abbey	
5 Dec	<b>Christmas Market</b> , Ripon Market Square	10:00am - 4:00pm
	<b>Carols by Candlelight</b> , Fountains Abbey	3:00 - 3:45pm
	<b>Festive Family Fun</b> , Lightwater Valley	3:30 - 7:30pm
6 Dec	<b>MacMillan Christmas Carol Concert</b> , Ripon Cathedral	7:30pm
11 Dec	<b>Festive Family Fun</b> , Lightwater Valley	3:30 - 7:30pm
	<b>Ripon Choral Society, Handel's Messiah</b> , Ripon Cathedral	7:30pm
12 Dec	<b>Christmas Market</b> , Ripon Market Square	10:00am - 4:00pm
	<b>Carols by Candlelight</b> , Fountains Abbey	3:00 - 3:45pm
	<b>Music Trust Advent Evensong</b> , Ripon Cathedral	3:30pm
	<b>Festive Family Fun</b> , Lightwater Valley	3:30 - 7:30pm
15 Dec	<b>Christmas Carols</b> , The Orchard at Grantley Hall	7:30pm
16 Dec	<b>Illuminated Winter Wonderland</b> , Ripon Spa Gardens	2:00 - 8:00pm
17 Dec	<b>Illuminated Winter Wonderland</b> , Ripon Spa Garden	2:00 - 8:00pm
	<b>Festive Family Fun</b> , Lightwater Valley	3:30 - 7:30pm
	<b>Christmas at the Workhouse</b> , The Workhouse Museum	6:00pm
18 Dec	<b>Illuminated Winter Wonderland</b> , Ripon Spa Gardens	2:00 - 8:00pm
	<b>Christmas Spectacular</b> , Ripon Cathedral	7:30pm
18 - 22 Dec	<b>Festive Family Fun</b> , Lightwater Valley	1:30 - 7:00pm
19 Dec	<b>Illuminated Winter Wonderland</b> , Ripon Spa Garden	2:00 - 8:00pm
	<b>Festival of Lessons &amp; Carols</b> , Ripon Cathedral	5:30pm
21 Dec	<b>La Nativité du Seigneur</b> , Ripon Cathedral	7:30pm
23 Dec	<b>Festival of Lessons &amp; Carols</b> , Ripon Cathedral	5:30pm
24 Dec	<b>Journey to Bethlehem</b> , Ripon Cathedral	11:00am
	<b>Festival of Lessons &amp; Carols</b> , Ripon Cathedral	5:30pm
	<b>Midnight Mass</b> , Ripon Cathedral	11:00pm
25 Dec	<b>Festal Eucharist</b> , Ripon Cathedral	10:30am
26 Dec	<b>Eucharist for St Stephen's Day</b> , Ripon Cathedral followed by Pilgrimage to Fountains Abbey	9:30am
27 Dec	<b>Ripon Museums Trust Ghost Walk</b> starting at Ripon Market Square	7:15 - 8:45pm
31 Dec	<b>Winter Wonderland Ball</b> , Grantley Hall	
	<b>New Year's Eve Celebrations</b> , Ripon Market Square	9:30pm - Midnight
	<b>Watchnight Service &amp; Torchlight Procession</b> , Ripon Cathedral to Market Square	11:15pm



## Message from Ripon Together

The community organisation Ripon Together, asks that any business who would like to participate in a **free** Alice themed treasure hunt/trail, lets them know.

For more information contact: [info@ripontogether.com](mailto:info@ripontogether.com) by 16th November.

Ripon Together will offer a cash prize to the winner, however if you are a business that can donate a further prize, please let them know.

The treasure hunt/trail will start from the end of November until 18th December and will celebrate the 150th anniversary of the publication of 'Alice Through the Looking Glass' on the 27th December. It is part of a wider Alice-themed project organised by Ripon Together.

